

The Emydex Packing Management module is a fully integrated component of the Emydex production management platform (iWAMS). The main function of the Packing Management module is to produce labels for stock items that can then be tracked and traced. In addition to printing a series of Yield and Production reports, Operators can use the Packing Management console to generate customer specific reports using the Emydex dynamic report generator

Key elements of the Emydex packing management module are:

Label Design

Labels can be generated for stock items that meet all customer specific requirements. Emydex utilises Nice Labels, a 3rd party labelling software product fully embedded into the iWAMS platform.

Nice labels is highly flexible, easy to use, printer independent and offers WYSIWYG functionality, which is important for previewing and tweaking customer label layouts before printing.

Nice labels supports GS1 standards, 2D barcodes, RFID label programming, multilingual, multiple dates, and can allow for images & logos to be incorporated onto labels.

Create Stock Items/Traceability

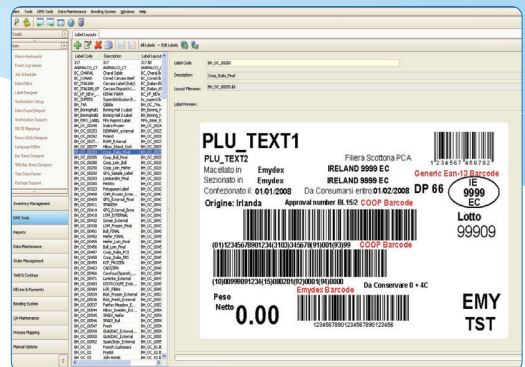
Serialised products are assigned with unique universal identification numbers allowing for full tracking and traceability of product through the warehouse.

The system allows for both Direct Palletising (based on target Quantity) and Direct Binning (based on target Weights)



▲ WYSIWYG Label Design

Label Management ▼



◀ Work Orders Terminal PC

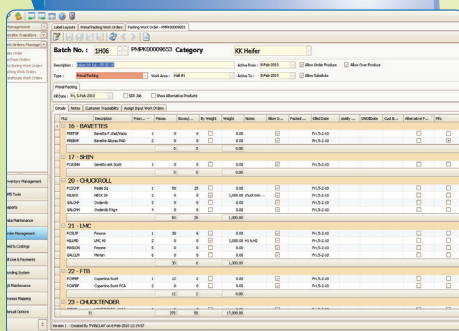
Work Orders (Optional)

All production lines can be controlled through Work Orders/Production plans which are either entered directly into Emydex or automatically imported from any ERP system.

Work Orders offer production managers the ability to control product priority, over-production, dates, label designs, batch numbers and many other Traceability features.

Dynamics macro buttons reflect actual order details and current production levels. Work orders can be scoped to individual or groups of PC Terminals

◀ Work Orders - Client PC



Yield Reporting

The Emydex Yield Generator allows all production to be grouped into batches. Once Production Inputs and Outputs are linked together, a Yield Generator is used to derive Yield Analysis and produce Yield reports.

The system provides the ability to link multiple Yields in order to derive overall Yield summaries i.e., by week, by month, by line

Yield Reports are configurable to meet specific business requirements such as input/output prices, targets/standards and Overheads

Yields can be priced at batch, line or box level

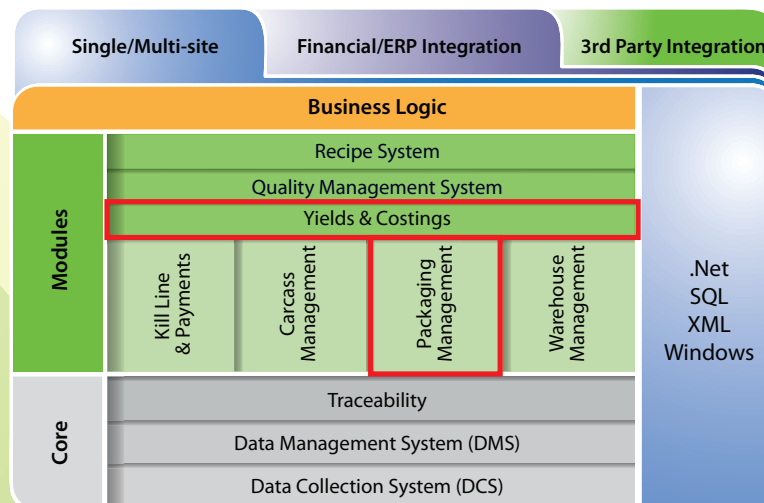
Incorporating Kill line data allows Animal purchase prices to be factored into deboning & offal harvesting Yield analysis calculations

▲ Yield Reporting (Client PC)

▶ Yield Reports

Packing System - Key Features

- Packing system runs on Touch screen Terminals
- Ability to print to multiple printers simultaneously
- Nice Labels – WISIWIG, Printer independent
- Supports over 350 different printer models
- Drivers for multiple indicators such as Bizerba, Marel/Scanvaegt, Avery, GSE and Alibi support
- Multiple levels – Unit, Case, Pallet
- Multiple Dates with advance offset rules
- Dynamic Screens allowing flexibility over layout and questions required
- Transaction History with Cancel Box at Terminal Facility
- Generate reports locally at Terminals
- Dynamic Macro Keyboards – unlimited shortcuts to PLU and Questions etc.
- Individual Weighed Pieces (IPP) – auto-generate Case end labels
- Offal Packing – linked back to Kill line for Yields analysis
- Rework/Relabelling



Packing Management Module fully integrated into the Emydex iWAMS platform

