



KCPN

ASSEMBLY KITS FOR COMPRESSION LOAD CELLS



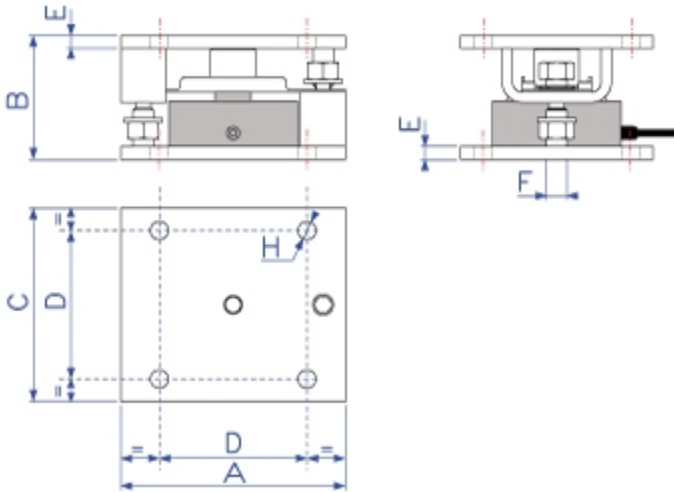
Assembly kits for CP compression cells: stainless steel accessories designed for weighing silos, tanks, hoppers. It is advisable to install the weighing system using just the accessory without the cell.

The best solution
for advanced industrial
applications

MAIN FEATURES

- EXECUTION IN AISI304 STAINLESS STEEL
 - GREAT RESISTANCE TO LATERAL FORCES
 - BOLTS FOR MAINTAINING THE RAISED POSITION, FOR EASY INSTALLMENT AND/OR SUBSTITUTION OF THE LOAD CELL
 - SELF-CENTERING CONNECTION SEGMENT BETWEEN LOWER AND UPPER PLATES.
- The KCPN kit is designed for allowing the correct functioning of the cells and for obtaining the requested weighing accuracy, but does not give protection to the cell and neither to the structure.

DETAIL 1



Code	Dimensions in mm						
	A	B	C	D	E	F	H
KCPN10	175	96	150	115	10	M16	ø14
KCPN15	175	96	150	115	10	M16	ø14
KCPN30	230	118	200	160	10	M20	ø17
KCPN100	320	154	320	250	15	M30	ø23



MWS LTD

UNIT 17 HUTCHINSON STREET - LE2 OBD - LEICESTER

Tel. 08452602602

Fax. 0044-08452602612

E-mail sales@mws.ltd.uk

Web www.mws.ltd.uk