

GLF

Stainless Steel Floor Scale

The GLF is a surface mount stainless steel scale that is designed and manufactured by MWS.

Its main feature is a gas strut assisted top deck making routine cleansing in high risk areas easier.

The GLF is free from hidden crevices and holes that allow moisture to build up harbouring bacteria and parasites.

The gas-assisted plate is hinged on one side and is safely operated by a single user.



Application

- Dolav / Reactor Weighing
- Hazardous Area Weighing

Features

- Much improved production area hygiene with lift up plate
- Decreased risk of bug traps
- IP69K Load cells & Junction Box
- Hygienic bead blast finish
- 304 stainless steel materials
- Lifetime warranty on the structural integrity

Options

- ATEX Load Cells & IS Junction Box
- Trade Approval to 3000d or 6000d (3000kg)
- Custom Sizes
- 316 Stainless Steel

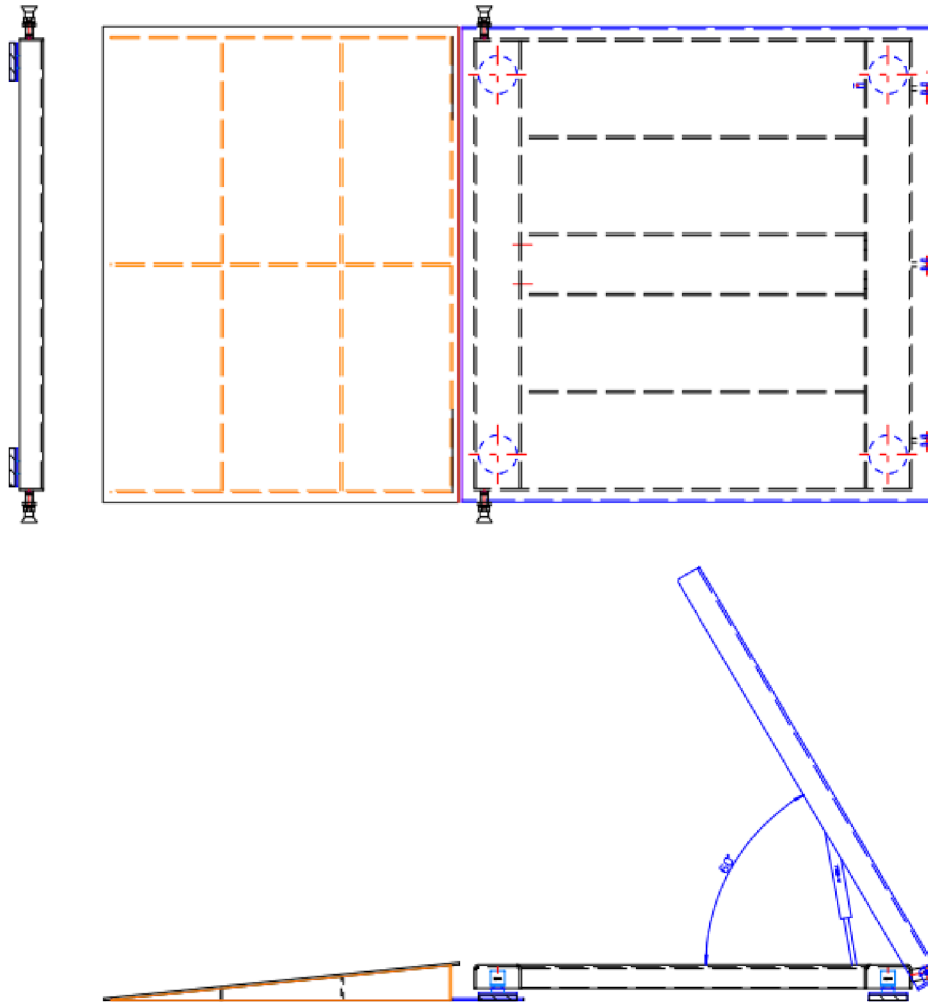
Standard Features



Optional Extras



Specifications



Model	Platform Size	Platform Height	Capacity	Load Cell
GLF75	750 x 750 mm	75 mm	300 – 1,000 kg	Flintec SB14
GLF1010	1000 x 1000 mm	75 mm	300 – 1,000 kg	Flintec SB14
GLF1212	1250 x 1250 mm	75 mm	300 – 1,500 kg	Flintec SB14
GLF/SP	Bespoke Sizes	TBC	300 – 6,000 kg	Flintec SB14